

Analyte Specifications:

**CCL4  
(MIP-1 $\beta$ )**

Catalog Number:

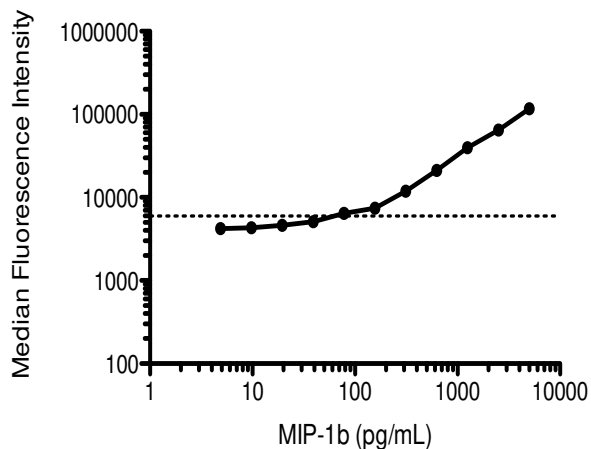
**92044**

**MultiCyt™ QBeads™ PlexScreen**

Reconstituting the MIP-1 $\beta$  standard in 2 mL of assay diluent results in a concentration of 5000 pg/mL. Standard curves for no-wash and 1-wash protocols were performed in triplicate (+/- S.D.). The limit of detection (dashed line) is 3 standard deviations above the mean of samples without Standard (N=12). Results are typical and may vary based on specific assay conditions.

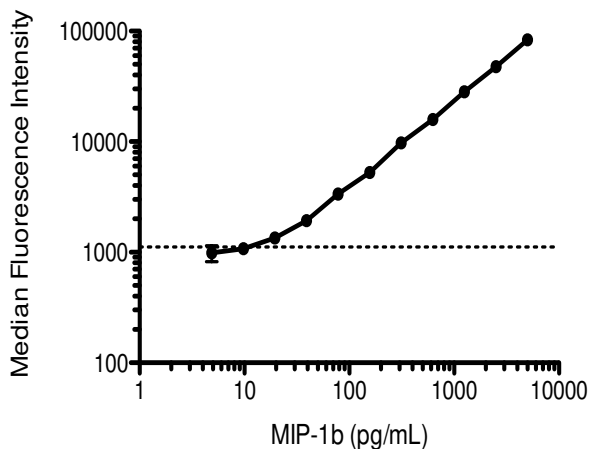
## STANDARD CURVES

**No-Wash Assay Performance**



**Lowest Detectable Test Conc. (pg/mL): 78.1**

**1-Wash Assay Performance**



**Lowest Detectable Test Conc. (pg/mL): 19.5**

For research purposes only. Not for resale.

Rev. 1 Jan 2014