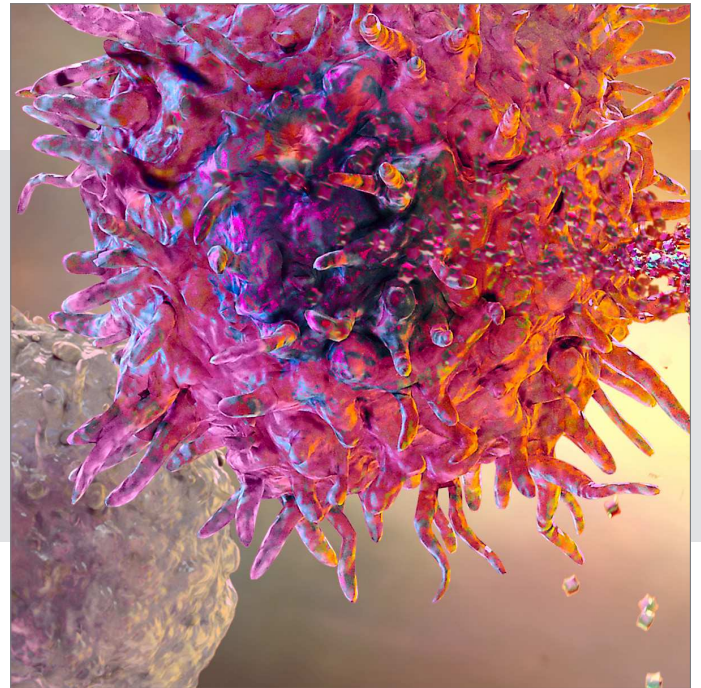




## Human T Cell Companion Kit

### Product Description:

The Intellicyt Human T Cell Companion Kits are used in combination with the Human T Cell Immunology portfolio of Kits. Human T Cell Companion Kits allow the measurement of human cytokines in addition to the cytokines already included in the Human T Cell Immunology Kits.



### List of Available Products

Part Number # 97028 IL-2  
Part Number # 97029 IL-6  
Part Number # 97030 IL-10  
Part Number # 97031 IL-13

Part Number # 97032 IL-17A  
Part Number # 97033 GM-CSF  
Part Number # 97034 TNF

### Components

Detection Reagent (50x) - 90  $\mu$ L  
Capture Beads (50x) - 90  $\mu$ L  
Lyophilized Standard - 1 vial  
USB Flash Drive Containing:  
Analysis Template

### Storage

Store at 2-8°C

### Use

Use in combination with Intellicyt Human T Cell Immunology Kits. The Human T Cell Companion Kits contain the reagent volumes needed to run a 1 x 384-well format or 4 x 96-well format of the Human T Cell Immunology Kits. Additional Human T Cell Companion Kits are needed for use with 5 x 96-well format and 5 x 384-well format of the Human T Cell Immunology Kits.

### Notes

The templates from the specific Human T Cell Immunology Kits do not have the appropriate gating for the companion kit beads. Use the Human T Cell Companion Kit template (see Figure 1 for the full gating of all 8 cytokine beads). The Human T Cell Companion Kits can only be used in conjunction with the Intellicyt Human T Cell Immunology portfolio of Kits.

The Human T Cell Companion Kits contain the reagent volumes needed to run a 1 x 384-well format or 4 x 96-well format of Human T Cell Immunology Kits. Additional Human T Cell Companion Kits are needed for use with 5 x 96-well format and 5 x 384-well format of Human T Cell Immunology Kits.

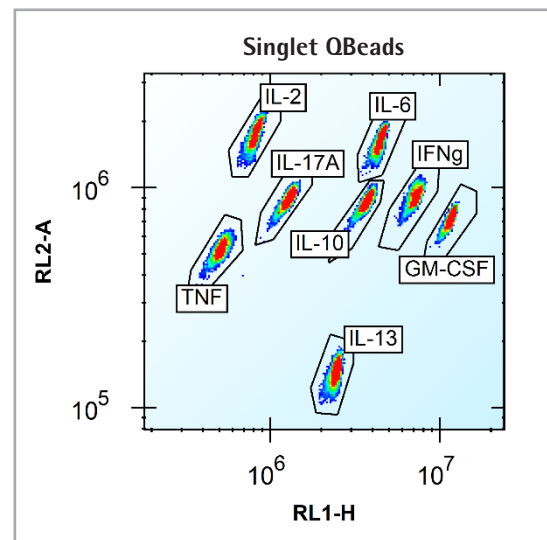


Figure 1: Human T Cell Companion Kit cytokine template.

## Procedure

**1. Combine Standards** – Combine the Human T Cell Companion Kit standards with the standards in the Human T Cell Immunology Kit.

For example: the Human T Cell Activation Cell and Cytokine Profiling Kit provides 2 cytokine standards: IFN $\gamma$  and TNF $\alpha$ . If you purchased IL-2 and IL-6 Human T Cell Companion Kits, combine all 4 cytokine standards together in a single tube (IL-2, IL-6, IFN $\gamma$ , and TNF $\alpha$ ).

After combining all additional cytokine standards in a single tube, follow the protocol in the Human T Cell Immunology Kit protocol guide. Perform standard reconstitution and titration.

**2. Combine Human T Cell Companion Kit Capture Beads (50x)**  
– To the pre-mixed capture beads in the Human T Cell Immunology Kit, add the appropriate amount of Human T Cell Companion Kit capture beads to the kit vial.

Vortex the Human T Cell Companion Kit capture beads for 30 seconds. Use volumes listed in the tables below for your specific Human T Cell Immunology Kit type and configuration.

**3. Combine Human T Cell Companion Kit Detection Reagent (50x)** – To the pre-mixed cytokine detection cocktail in the Human T Cell Immunology Kit, add the appropriate amount of detection reagent to the kit vial. Use volumes listed in the tables below for your specific Human T Cell Immunology Kit type and configuration.

**4. Perform the Assay** – Follow the protocol for your particular Human T Cell Immunology Kit and configuration.

**Reagents Included in Human T Cell Activation Cell and Cytokine Profiling Kit**

	1 x 96-well	5 x 96-well	1 x 384-well	5 x 384-well
<b>Human IFN<math>\gamma</math> and TNF<math>\alpha</math> Separate Standards (1 Vial Each)</b>	1 IFN $\gamma$ 1 TNF $\alpha$	5 IFN $\gamma$ 5 TNF $\alpha$	2 IFN $\gamma$ 2 TNF $\alpha$	10 IFN $\gamma$ 10 TNF $\gamma$
<b>Human IFN<math>\gamma</math> and TNF<math>\alpha</math> Capture Beads (pre-mixed)</b>	1.25 mL	6.25 mL	2.50 mL	12.50 mL
<b>Cytokine Detection Cocktail</b>	1.25 mL	6.25 mL	2.50 mL	12.50 mL

**For each Human T Cell Companion Kit cytokine, add volumes listed below to original kit components**

	1 x 96-well	5 x 96-well	1 x 384-well	5 x 384-well
<b>Human Cytokine Standard (vials)</b>	1 standard	Combine Human T Cell Companion Kit standard(s) with IFN $\gamma$ and TNF $\alpha$ Kit standards prepared fresh on each day of use.		
<b>Human T Cell Companion Kit Capture Beads (50x)</b>				
<b>Add volume to the human IFN<math>\gamma</math> and TNF<math>\alpha</math> Capture Beads (pre-mixed)</b>	25 $\mu$ L	Use volumes listed for each 1 x 96-well format and scale up as needed for # of plates/day	50 $\mu$ L	Use volumes listed for each 1 x 384-well format and scale up as needed for # of plates/day
<b>Companion Detection Reagent (50x)</b>	25 $\mu$ L		50 $\mu$ L	
<b>Add volume to the Cytokine Detection Cocktail</b>				

Human T Cell Activation Cell and Cytokine Profiling Kit: fill amounts are for a full 96, or 384-well format.

Essen BioScience, A Sartorius Company  
300 West Morgan Road  
Ann Arbor, Michigan, 48108 USA

www.sartorius.com  
Email: info@sartorius.com

USA +1.734.769.1600  
UK +44.1707.358688  
Japan +81.3.5826.4795

Doc Number: 17042

© 2019, Essen BioScience, Inc., part of the Sartorius Group. All Rights Reserved. Intellicyt®, iQue Screener PLUS®, ForeCyt®, MultiCyt®, QBead® and all names of Intellicyt products are registered trademarks and the property of Intellicyt unless otherwise specified. Intellicyt is a Sartorius brand.

FOR RESEARCH USE ONLY. NOT FOR IN VITRO DIAGNOSTIC USE.